

### ***Pre-conference Tour – Tropical Nth Qld & Central Aust***

*Saturday February 14<sup>th</sup>, 2004*

Arrive Cairns Airport and transfer to accommodation at Paradise on the Beach Resort, Palm Cove. This beachside resort is set idyllically with a golden sand and palm-fringed beach at your doorstep.



*Sunday February 15<sup>th</sup>, 2004*

Tour of Great Barrier Reef. Meet in reception for the coach connection to the jetty where you'll board the boat. Travel to the outer reef and snorkel and swim amongst the fish and coral. Late afternoon arrival at Paradise on the Beach Resort.

*Monday February 16<sup>th</sup>, 2004*



Take a morning flight to Alice Springs in Central Australia and check in to The Diplomat Hotel. Depart for an afternoon tour of Standley Chasm and Simpsons Gap, clefts in the imposing MacDonnell Ranges to the west. The tour concludes at Anzac Hill where panoramic views of Alice Springs are afforded.

*Tuesday February 17<sup>th</sup>, 2004*

An early rise for the transfer by road to Uluru (Ayers Rock). Located some 450 kilometres from Alice Springs, the world's greatest monolith rises 348 metres above the desert floor. Arrive early afternoon at campsite and after lunch visit The Olgas, a cluster of massive rounded rocks. Take a walk through the 'Valley of the Winds' before the spectacular sunset viewing of Uluru. Dinner around the campfire and camping accommodation under the stars conclude the day's program.

*Wednesday February 18<sup>th</sup>, 2004*

Another early rise for sunrise climb of Ayers Rock followed by tour of the base caves. The 1.6 kilometre climb is not for the unfit and is quite strenuous. As it follows an important religious track, the traditional owners prefer that visitors take other discovery walks. Late morning transfer to airport for flight to Melbourne where you'll arrive early evening. Transfer to your accommodation.



*Cost AUD:*           \$ 957 per person (twin or double share).  
                              \$1133 per person (single supplement).

*Includes:*            Tour of Great Barrier Reef, four nights' accommodation (motel and camping), tour of Ayers Rock, The Olgas and Stanley Chasm, all breakfasts, lunches (except Day 4), dinner on day 3, transfers, GST.

The above package assumes delegates would fly into Cairns before the first day. We would arrange accommodation at Palm Cove, on the northern beaches 20 minutes from Cairns. The cost does not include airfares from Cairns to Alice Springs or Ayers Rock to Melbourne.

## ***Post-conference Tour – Great Ocean Road/Grampians/Ballarat***

*Sunday February 22<sup>nd</sup>, 2004*



Depart Melbourne at 1pm and travel to the west through Geelong, the state's second largest city. Pick up the Great Ocean Road in Torquay and continue on to Lorne where the dual mix of the ocean and the Otway Ranges is breathtaking. An early dinner would be taken at Lavers Hill before the drive through to the rainforest at Melba Gully then to the Shipwreck Coast. The early evening would feature the coastal rock formations of Loch Ard Gorge, 12 Apostles and The

Arch before arriving in Port Campbell.

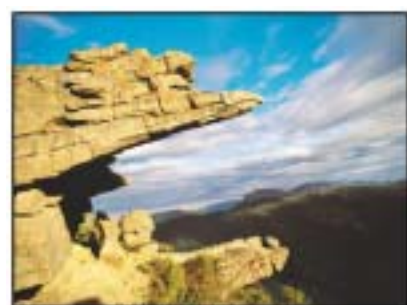
*Monday February 23<sup>rd</sup>, 2004*

After breakfast, travel into the large regional centre of Warrnambool and then through to Tower Hill, an extinct volcano and now a State Park. A walk through the park reveals koalas in generous numbers together with native birds, emus and the occasional kangaroo. Late morning travel inland, away from the coast to Dunkeld where lunch will be enjoyed at the stylish Royal Mail Hotel. After lunch, a visit would be made to Crombie Homestead where our hosts Rex and Gay Beveridge will provide an insight into life on the land. Enjoy a shearing and sheep dog demonstration as well as a garden stroll. Late afternoon transfer through to Halls Gap, the major town at the heart of the breathtaking Grampians mountain range.



*Tuesday February 24<sup>th</sup>, 2004*

Depart Halls Gap and travel through the Grampians taking in some of the most spectacular scenery the state has to offer. Included are The Balconies, Mt Difficult Lookout and The Jaws of Death before transferring through to Ballarat and Sovereign Hill. After the welcome, some free time would be available to explore the park. Sovereign Hill is a recreation of Ballarat's first ten years following the discovery of gold there in 1851. Adjourn to the Charlie Napier Hotel for dinner before experiencing the sound and light show, 'Blood on the Southern Cross'. The show brilliantly recreates the events that lead to Australia's only civil war, the Eureka Stockade on Sunday December 3<sup>rd</sup> 1854. Return to Melbourne and arrive around 11pm.



**Cost AUD:** \$671 per person, based on a minimum of 10 people (twin/double share).  
\$792 per person, based on a minimum of 10 people (single share).

**Includes:** Deluxe mini-bus transport, two nights accommodation plus breakfasts, lunch on each day, shearing demonstration and farm visit at Crombie Homestead, tour of Melba Gully, Port Campbell National Park, Tower Hill, Grampians and Sovereign Hill, entry fees to Sovereign Hill and Blood on the Southern Cross, dinner on the final night at Sovereign Hill, GST.

## ***City Sights***

*Thursday February 19<sup>th</sup>, 2004*



Discover why Melbourne is known for its old world charm, beautiful gardens and historic Victorian buildings. In the city see the Old Customs House and colourful Queen Victoria Market and in nearby Carlton the iron laced works of the terraced houses. Travel past Parliament House, St Patrick's Cathedral, Melbourne Cricket Ground, the National Tennis Centre, and the Shrine of Remembrance before stopping at the Royal Botanic Gardens. Continue on through the quaint inner city suburbs of South Melbourne and Port Melbourne. The tour concludes with panoramic views of Melbourne from the Rialto Towers Observation Deck.

*Cost AUD:* \$65 per person, based on a minimum of 25 people.

*Includes:* Deluxe coach transport, city sights tour, afternoon tea at the Royal Botanic Gardens, entry to Rialto Towers, guide, GST.

*Times:* 1.00pm to 5.30pm

## ***Yarra Valley***

*Friday February 20<sup>th</sup>, 2004*



One of the world's premium wine producing regions lies to the east of Melbourne, within an hour's drive of the CBD. This cool climate region that was first planted in 1838 is renowned for its sparkling and elegant table wines. Visits would be made to two family properties, Kellybrook and De Bortoli, where the contrast in their respective operations could not be more obvious, before finishing at the French owned Domaine Chandon.

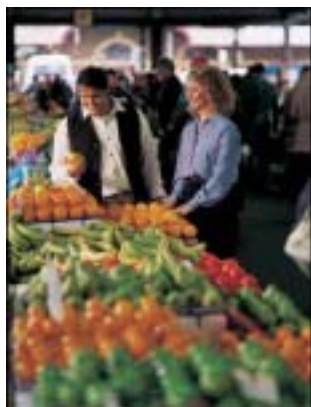
*Cost AUD:* \$105 per person, based on a minimum of 25 people.

*Includes:* Deluxe coach transport, wine tastings at Kellybrook and De Bortoli Wineries, cheese and biscuits at Kellybrook, main course lunch, glass of wine and coffee at De Bortoli Restaurant, glass of wine with food snack at Domaine Chandon, guide, GST.

*Times:* 9.00am to 4.30pm.

### ***Marvellous Market***

*Saturday February 21<sup>st</sup>, 2004*



Gain an insight into Melbourne, its early history, multiculturalism and its love of food on this morning tour of the historical Queen Victoria Market. Dating back to 1878 and spread over some seven hectares, the market is home to nearly 1000 traders and has received National Trust classification. Enjoy a guided tour of this outstanding attraction.

*Cost AUD:* \$85 per person, based on a minimum of 25 people.  
*Includes:* Deluxe coach transport, guided tour of Queen Victoria Market, morning tea, two course lunch with coffee, guide, GST.  
*Times:* 9.30am to 2.00pm.

### ***Penguins***

*Saturday February 21<sup>st</sup>, 2004*



Enjoy the antics of the world's smallest penguins at fascinating Phillip Island. The sight of Australia's largest fairy penguin colony emerging from the surf and waddling up the beach with food for their young brings howls of delight from an enthralled crowd. A visit would also be made to the Koala Conservation Centre.

*Cost AUD:* \$110 per person, based on a minimum of 25 people.  
*Includes:* Deluxe coach transport, entry to Koala Conservation Centre and Penguin Reserve, two course dinner, guide, GST.  
*Times:* 3.00pm to 11.00pm.

**TOURS BOOKING FORM**

Link Tours Pty Ltd has been appointed to manage the tours program for the IPCRG 2<sup>nd</sup> World Conference. It is a Melbourne based company that has been established for more than 20 years. Link Tours will be operating a tour desk during the conference. Tours are not included in the registration fee and are to be paid for separately. Booking and payment for the tours are to be made directly with:

Link Tours Pty Ltd  
294 Montague Street, South Melbourne, VIC 3205, Australia  
Phone: 61+3+9699-8422  
Fax: 61+3+9690-2902  
Email: paul@linktours.com.au  
http:// www.linktours.com.au

<b><u>Tour</u></b>	<b><u>Cost</u></b>	<b><u>No of seats</u></b>
Pre-conference (Feb 14-18)	\$ 957.00	.....
	\$1133.00	.....
Post-conference (Feb 22-24)	\$ 671.00	.....
	\$ 792.00	.....
City Sights (Feb 19)	\$ 65.00	.....
Yarra Valley (Feb 20)	\$ 105.00	.....
Marvellous Market (Feb 21)	\$ 85.00	.....
Penguins (Feb 21)	\$ 110.00	.....
<i>Total</i>		.....

**Personal Details**

Title:.....First Name:.....Surname:.....

Organisation:.....

Telephone (Work):.....Facsimile:.....

E-Mail:.....

**Payment Details**

Cheque in Australian Dollars made payable to Link Tours Pty Ltd

or

Payment can be made (tick appropriate box)     Visa     Mastercard     Amex

Cardholder's Name:.....

Credit Card Number:...../...../...../..... Expiry date:.....

Cardholder's signature:.....